

Great LAND Investment Opportunity !



ANTHONY & CO.

Baxter M. Walker, III

BWalker@aacre.com
919.582.3112

Hwy 55 Land

LOCATION	Hwy 55, 1220 North Main Street: 3.22 Acres (+/-) 2.95 Acres (+/-) 3.69 Acres (+/-) Holly Springs, NC 27540
ACREAGE	9.86 Acres (+/-) Three Parcels
PRICE	\$315,000 per Acre
ZONING	HS Local Business
BENEFITS	<ul style="list-style-type: none"> * Excellent Ownership Opportunity for Development * Approved Uses Include: Office, Medical, Minor Auto Service, Retail, among others
HOLLY SPRINGS HONORS & RECOGNITIONS	18th Fastest Growing Suburb in US* 22nd Best Place To Live in the US* <small>* August 2007 Forbes Magazine, July 2007 Money Magazine</small>



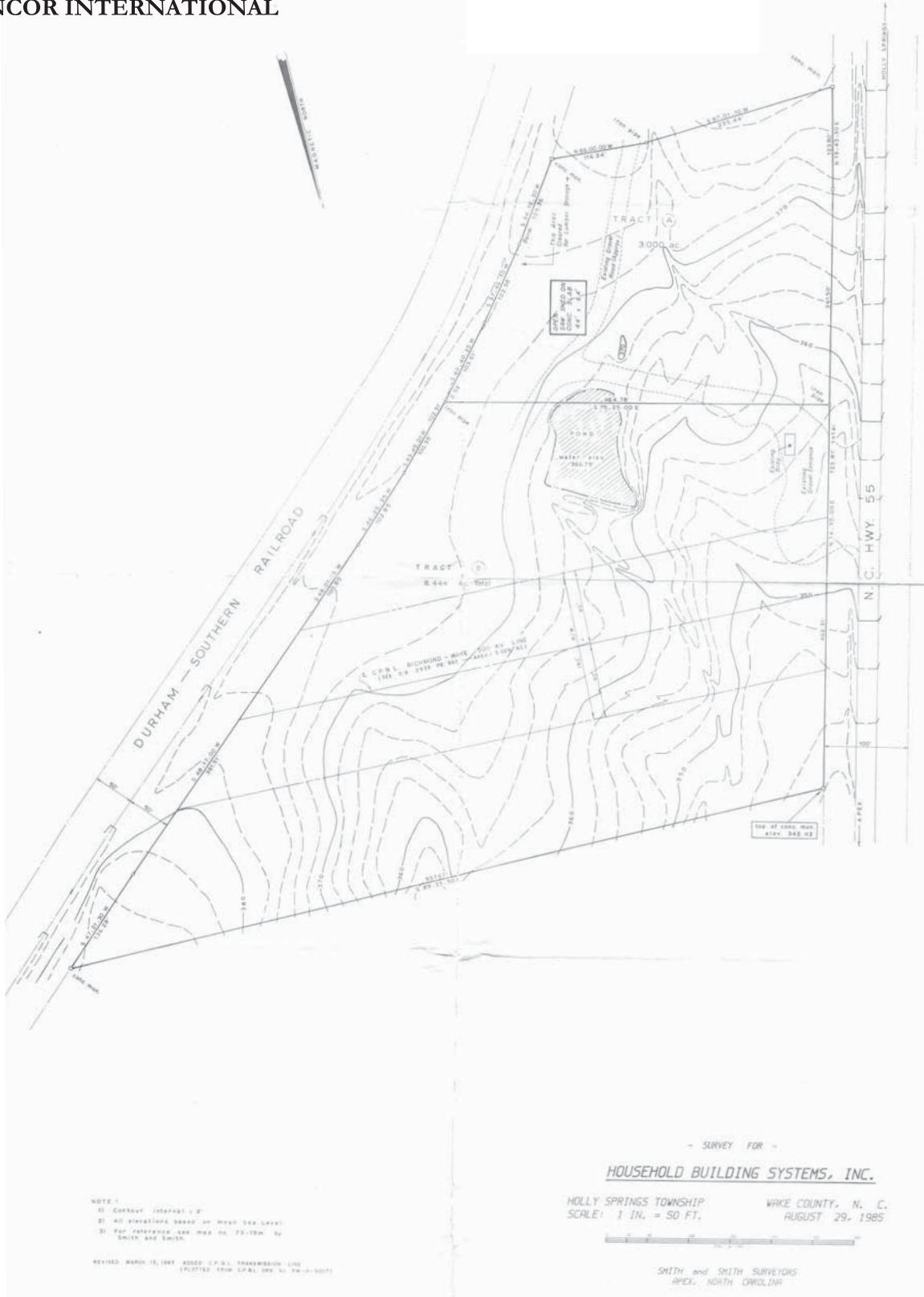


Baxter M. Walker, III

BWalker@aacre.com

919.582.3112

ANTHONY & CO.
ONCOR INTERNATIONAL



NOTE:
1) Contour interval = 2'
2) All elevations based on Mean Sea Level
3) For reference see map No. 73-108' by Smith and Smith.

REVISED MARCH 19, 1987 ADDED C.P.D. TRANSMISSION LINE (PLOTTED FROM L.P.A.L. DEK. NO. 74-1-1-107)

- SURVEY FOR -
HOUSEHOLD BUILDING SYSTEMS, INC.
HOLLY SPRINGS TOWNSHIP WAKE COUNTY, N. C.
SCALE: 1 IN. = 50 FT. AUGUST 29, 1985



SMITH and SMITH SURVEYORS
APEX, NORTH CAROLINA